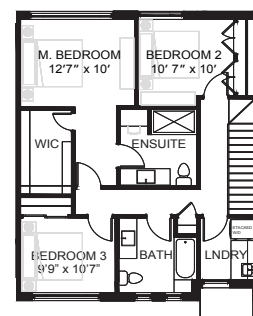


OPTIONAL
3 pc Bath
in Basement



OPTIONAL
3 Bedroom Plan

BLOCK 1 • UNITS 2 & 5



THE WILLOW

4 Bedroom, 2.5 Bathroom, 2 Storey Townhouse with Backyard,
Finished Basement, 2 Parking Spots

UNIT #	BASEMENT	TOTAL SQFT
2	510	1,958 incl basement
5	510	1,965 END UNIT incl basement

Specification and plans are subject to change without notice E&OE. Actual useable floor space may vary from stated floor area.
Illustrations depicted are an artist's concept of the completed building only. Illustrations may show optional features, which may not be included in the base price.
Ask your Glendor Towns representative for more information.